

# 15 BBL CUTTING BOX



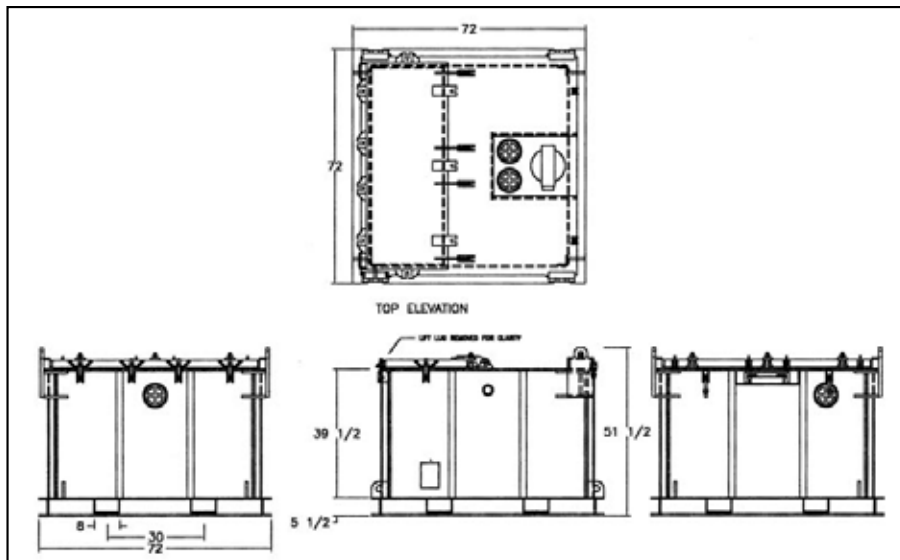
## SPECIFICATIONS:

- Tare weight 3,740 LBS.
- Max gross weight 20,500 LBS.
- Safe working load weight 16,760 LBS.
- Lid opening 22" deep x 60-1/4" wide
- Test pressure: 29 PSI
- Product density 26.5 LBS./GAL.  
(specific gravity 3.18)
- Stack three high (empty only)
- 6" front and rear fittings
- 4 way fork lift pockets
- Galvanized inside and out
- Aluminum vacuum lids available
- Lid retaining bolts
- Outside dimensions:  
72" wide x 72" deep x 51-1/2" high
- Inside dimensions:  
61-1/4" wide x 61-1/4" deep x 39" high

Designed for drill cuttings but may be used for any liquid or solid classified as a Packing Group II or III. These boxes pass D.O.T.'s 7 required tests...Vibration, Bottom Lift, Top Lift Lug, Bottom Lift Lug, Stacking, Water Tightness, Hydrostatic and Drop... 8 tests in all.

Container constructed to DOT/ UN31-A specifications, pack- ing group II and III; including 29 PSI test, 3.9 FT. drop test when filled to max gross weight, and vibration test.

Constructed with 1/2" plate floor and top, 3/8" plate walls and lid, hinged and gasketed lid secures with 6-forged eye nuts and swing bolts, top lift eyes with stacking pads (for stacking empty only), bottom lift eyes, 4-way fork lift pockets, pressure relief vent set at 3 PSI. The Tiger 15 BBL Cutting Box is designed for offshore dynamic lifting in accordance with the provisions of API RP 2A and SEPco document OPS0055.



# 15 BBL CUTTING BOX

## STRAPPING CHART

INCHES	BARRELS	GALLONS	INCHES	BARRELS	GALLONS
0	0	0	21	8.085	339.57
1	0.385	16.17	22	8.47	355.74
2	0.77	32.34	23	8.85	371.7
3	1.16	48.72	24	9.24	388.08
4	1.54	64.68	25	9.625	404.25
5	1.925	80.85	26	10.01	420.42
6	2.31	97.02	27	10.395	436.59
7	2.695	113.19	28	10.72	452.76
8	3.08	129.36	29	11.165	468.93
9	3.465	145.53	30	11.55	485.1
10	3.85	161.7	31	11.935	501.27
11	4.235	177.87	32	12.32	517.44
12	4.62	194.04	33	12.705	533.61
13	5.005	210.1	34	13.09	549.78
14	5.39	226.38	35	13.475	565.95
15	5.775	242.55	36	13.86	582.12
16	6.16	258.72	37	14.245	598.29
17	6.545	274.89	38	14.63	614.46
18	6.93	291.06	39	15	630
19	7.315	307.23			

