

SUMMER 2008



SPREADERRR
Operator's Manual


MODERN
AG PRODUCTS, LTD.

YOU'RE ALWAYS AHEAD...WITH A MODERN BEHIND.

P.O. BOX 790 • BEAUMONT, TX 77704
409.833.2665 • 1.800.231.8198 FAX: 409.726.8333
www.modernusa.com

Go Galvanized!

SAFETY SECTION

The SAFETY ALERT SYMBOL  indicates that there is a potential hazard to personal safety involved and extra safety precautions must be taken. When you see this symbol on your machine or in this manual, be alert and carefully read the message that follows it.

DANGER: Indicates an imminently hazardous situation which, if not avoided, will result in death or serious injury. This signal word is limited to the most extreme situations.

WARNING: Indicates a potentially hazardous situation which, if not avoided, could result in death or serious injury.

CAUTION: Indicates a potentially hazardous situation which, if not avoided, may result in minor or moderate injury. It may also be used to alert against unsafe practices.

OPERATION

DANGER

Driveline shields and gearbox shields should be used and maintained in good working condition.

Do not mount or dismount the spreader while the tractor is moving. Mount and dismount the tractor only when it is completely stopped.

Do not turn sharp enough to get severe "knocking" of the driveline which will cause accelerated wear and breakage of drive train components and possible injury from the separated driveline sections.

Never allow riders on either tractor or spreader. Falling can be fatal.

DANGER

Never allow children to operate or ride on the tractor or spreader.

Never work under the spreader unless it is securely supported or blocked up. A sudden or inadvertent fall by any of these components could cause serious injury or death.

WARNING

Before leaving the tractor seat, always engage the brake and or set the tractor transmission in parking gear. Disengage the PTO, stop the engine, remove the key, and wait for all moving parts to stop. Place the tractor shift lever into a low range or parking gear to prevent the tractor from rolling. Never mount or dismount a moving tractor. Operate the tractor controls from the tractor seat only.

The rotating parts of this machine continue to rotate even after the PTO has been turned off. The operator should remain in his seat for 60 seconds after the brake has been set, the PTO disengaged, the tractor turned off, and all evidence of rotation has ceased. "Wait a minute... Save a life!"

Remove hydraulic pressure, disengage the PTO and turn off engine prior to doing any maintenance.

Inspect the entire machine periodically. Look for loose fasteners, worn or broken parts. Make sure all pins have cotter pins and washers. Serious injury may occur from not maintaining this machine in good working order.

SAFETY SECTION

WARNING

Never operate the tractor and spreader until you have read and completely understood this manual, the tractor operator's manual, and each of the Safety Messages found on the decals on the tractor and spreader.

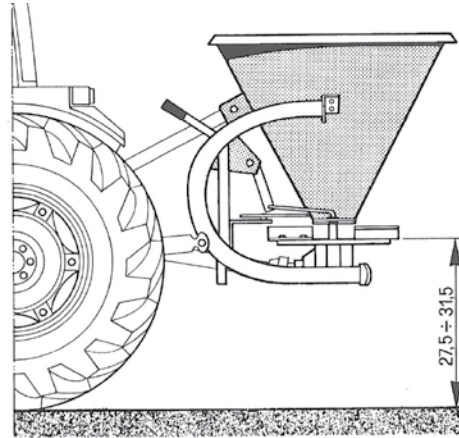
Always maintain the safety decals in good readable condition. If the decal become damaged or unreadable, order replacement decals immediately.

CAUTION

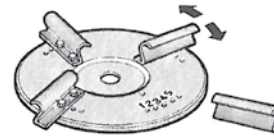
It may be necessary to shorten PTO shaft before operation to prevent damage to gear-box, shaft or operator.

PROLONGED EXPOSURE TO LOUD NOISE MAY CAUSE PERMANENT HEARING LOSS.

Tractors with or without spreaders attached can often be noisy enough to cause permanent, partial hearing loss. We recommend that you wear hearing protection on a full time basis if the noise in the operator's position exceeds 80 db. Noise over 85 db on a long-term basis can cause severe hearing loss. Noise over 90 db adjacent to the operator over a long-term basis may cause permanent, total hearing loss. Note: hearing loss from loud noise is cumulative over a lifetime without hope of natural recovery.

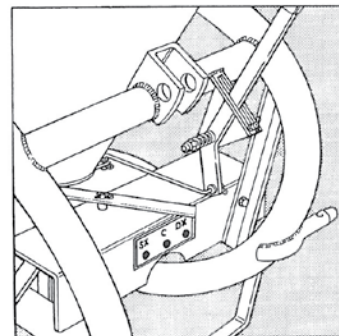


Before operating the spreader, make sure that the spreader disc is set to the horizontal position and at about 27, 5/31,5 in from ground level.



SPREADING DISC WITH REVOLVING VANES.

As the fertilizers have relatively different absolute weights, in order to obtain a perfect spreading it is necessary to adjust the vanes in order to compensate for the differences. The vanes are usually set to position 3, by moving them to position n 5 causes distribution to be increased towards the right.



SX c dx

THREE SPREADING POSSIBILITIES.

A simple adjustment of lower level allows directioning of distribution towards the right side or towards the left side of the tractor operator.

 DANGER

**ROTATING DRIVE LINE
KEEP AWAY**

DO NOT OPERATE UNLESS PTO GUARDS, TRACTOR MASTER SHIELD AND IMPLEMENT GUARDS ARE IN PLACE.

PTO GUARDS MUST TURN FREELY AND BE PROPERLY ATTACHED AND MAINTAINED.

U-JOINT YOKES MUST BE SECURELY LOCKED ONTO TRACTOR AND IMPLEMENT SHAFTS.

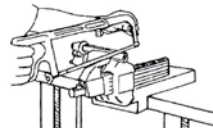
BE SURE TRACTOR DRAWBAR AND IMPLEMENT HITCH ARE ADJUSTED CORRECTLY.

GREASE SHAFT REGULARLY.

FAILURE TO HEED THESE WARNINGS MAY RESULT IN PERSONAL INJURY OR DEATH.

CAUTION

IT MAY BE NECESSARY TO SHORTEN PTO SHAFT BEFORE OPERATION TO PREVENT DAMAGE TO GEARBOX, SHAFT OR OPERATOR.



SPREADING CHART

QUANTITY TO BE SPREAD IN LB/ACRE
AT SPEED LISTED IN MPH COLUMNS

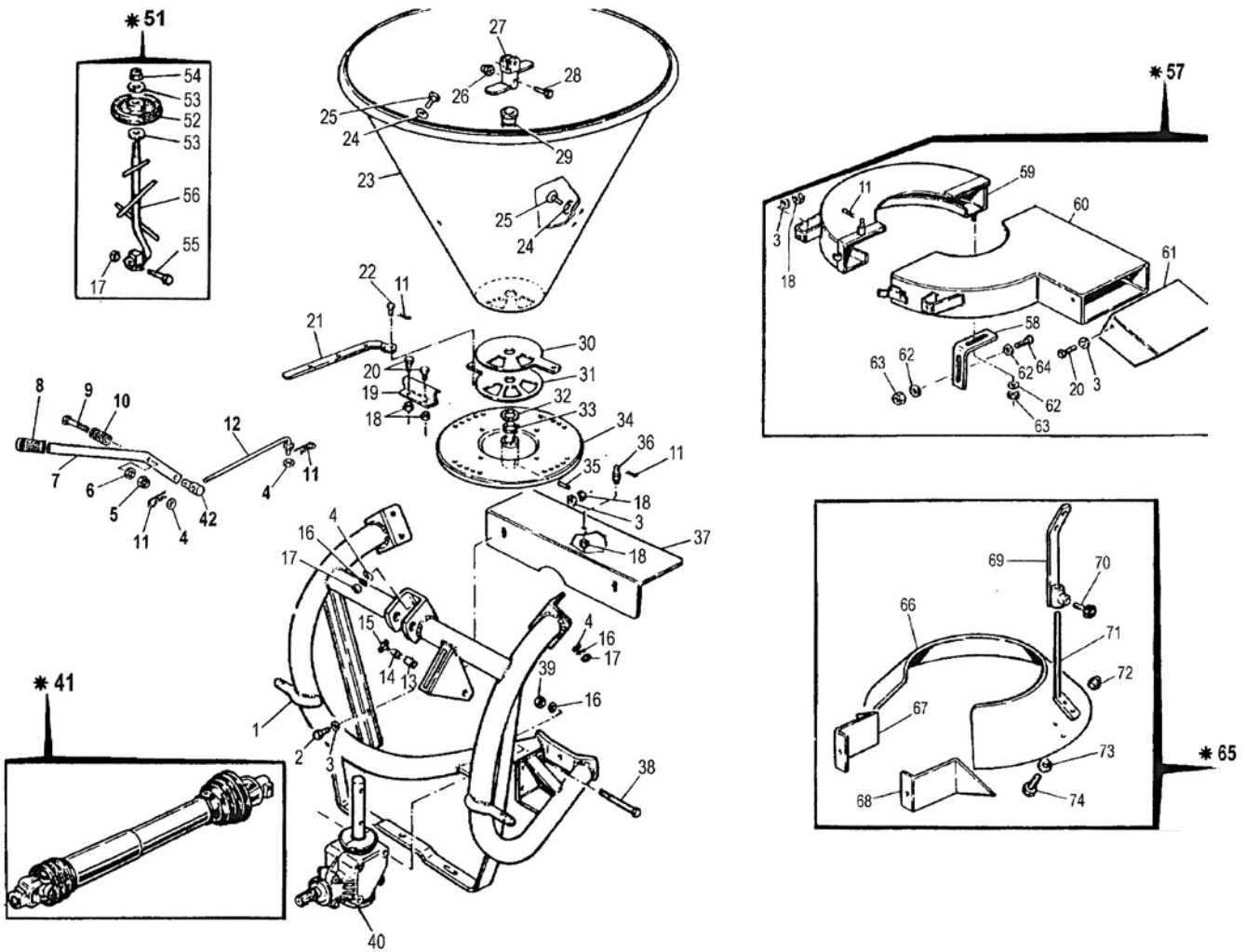
FERTILIZER TYPE	RPM	SPREADING WIDTH FT"	FEED OPENING												
			MPH	1.5	2	2.5	3	3.5	4	4.5	5	5.5	6	6.5	7
			COARSE GRAIN FERTILIZERS												
	540	72'	1	198	330	608	1002	1280	1580	1916	2313	2543	2860	3132	3523
			2.5	93	137	244	409	510	634	781	924	1016	1148	1276	1433
			5	51	69	128	202	257	317	388	466	516	594	653	735
			7.5	34	53	84	137	173	216	257	319	339	396	427	486
			10	20	34	63	105	132	169	198	238	255	295	325	370
MEDIUM GRAIN FERTILIZERS															
	540	59'	1		460	788	1126	1439	1787	1987	2309	2546	2788	2950	3244
			2.5		173	326	462	590	730	816	935	1027	1127	1188	1316
			5		104	169	233	299	371	412	473	519	574	602	663
			7.5		72	112	161	196	250	282	321	350	395	409	451
			10		53	81	114	153	187	204	243	264	291	308	336
FINE GRAIN FERTILIZERS															
	540	39'	1	174	285	484	815	1052	1326	1554	1870	2105	2414	2622	1919
			2.5	84	121	202	336	435	545	610	762	854	987	1071	1172
			5	46	60	106	176	222	277	320	392	436	494	535	596
			7.5	29	40	921	20	151	191	218	260	294	336	365	400
			10	17	30	52	86	113	136	166	198	231	253	279	295
MEDIUM CRISTALLINE FERTILIZERS															
	540	26.3'	1	330	546	1007	1632	2019	2587	3024	3603	4033	4476	4908	5407
			2.5	115	219	412	661	816	1053	1221	1446	1621	1801	1973	2174
			5	68	112	209	329	416	534	614	730	821	907	989	1092
			7.5	44	76	160	223	280	364	415	490	546	606	664	728
			10	30	54	100	171	208	275	318	363	408	455	496	549
CALC. CYANAMIDE AND S.															
	540	32.8'	1	275	750	1104	1636	2020	1844	2868	3345	4289			
			2.5	109	300	453	662	809	994	1158	1343	1508			
			5	58	149	229	297	407	495	584	672	753			
			7.5	37	99	148	218	272	333	388	449	502			
			10	26	73	112	166	204	251	185	336	376			

SPREADING CHART

SPREADING CHART IN LB/ACRE
AT SPEED LISTED IN MPH COLUMNS
FORWARD SPEED IN MILES PER HOUR

SEEDS	PTO SPEED RPM	SPREAD-ING WIDTH IN FT	FEED OPENING	FORWARD SPEED IN MILES PER HOUR				
				1	2.5	5	7.5	10
WHEAT	540	52	2	269	107	54	35	25.5
			2.5	436	173	86	57	42
			3	596	238	119	78	59
			3.5	730	312	156	104	77
OATS	540	26	1.5	207	81	40	26	19
			2	342	136	68	45	33
			2.5	510	203	100	58	49
			3	684	273	136	91	68
RYE	540	52	2	348	137	71	45	34
			2.5	541	213	107	72	55
			3	741	296	147	98	76
			3.5	902	361	180	121.0	90
BARLEY	540	39	2.5	356	142	70	46	35
			3	433	173	85	56	43
			3.5	598	240	119	80	58
			4	737	294	146	97	72
RYE GRASS	540	16	1.5	49	19	10.5	7	5
			2	140	56	29	19	14
			2.5	295	118	60	40	30
RAPE SEED	540	21	1.5	38	16	8	6	3.5
			2	211	84	41	28	21
			2.5	421	169	84	56	41
RED CLOVER	540	21	1.5	56	22	10.5	7	6
			2	194	77	39	25.5	20
			2.5	474	191	95	64	48

MAIN ASSEMBLY



ITEM	PART NO.	QUANTITY	DESCRIPTION
1	WA251100	1	Frame
2	523908220	2	Cap Screw 8x20 din 933
3	659208ZN	4	Plain Washer M8 din 125/A
4	659210ZN	7	Plain Washer M10 din 125/A
5	747310NZ	1	Locknut M10 din 982
6	PA251027	1	Bakelite washer
7	XA251010	1	Adjustment Lever
8	IMGO0820	1	Rubber Handle 8x20
9	50371065	1	Cap Screw M10 x 65 din 931
10	PA251026	1	Compression - Spring
11	80100250	4	Cotter Pin A R 02 L.50
12	XA251127	1	Adjustment Bar
13	PA251024	1	Fixing Block
14	PA251025	1	Indicator
15	54490616	1	Wing screw 6x16 din 316
16	679810ZN	8	Washer M10 din 6798
17	558710ZN	5	Hex nut M10 uni 5587
18	558708ZN	11	Hex nut M08 uni 5587
19	PA251023	4	Vane
20	52390816	8	Bolt M8x16

MAIN ASSEMBLY

ITEM	PART NO.	QUANTITY	DESCRIPTION
21	XA251007	1	Selector Rod RH-LH
22	PA251014	1	Connection Pin
23	BA151001	1	150 Steel Hopper
	BA251000	1	250 Steel Hopper
	BA301001	1	300 Steel Hopper
	BA351001	1	400 Steel Hopper
	BA401001	1	500 Steel Hopper
24	PV251004	5	Washer for Hopper Fixing
25	57321025	5	Cuphead screw 10x25 din 603
26	747308ZN1	1	Locknut M8 din 982
27	XA251002	1	Agitator
28	52370845	1	Bolt M8x45 din 931
29	PA251016	1	Agitator bush guide
30	PA251018A	1	Quantity Adj disc
31	PA251019A	1	Adj disc - 3 hole
32	PA251021	1	Lock washer
33	74353200	1	Snap ring e 032 din 471
34	PA251010	1	Spreading disc
35	XA251044	1	Pin 08 L 40
36	XA251014	1	Adj pin
37	WA251001	1	Guard
38	50371010	3	Bolt M10x100 din 931
39	558810ZN	3	Hex nut M10 din 931
40	+XA251016	1	Gearbox - 3 hole
41	C3170000	1	Driveshaft L 700
42	XA251128	1	Adj bar connector
51	PA251400	1	Articulated wheel
52	PA251312	1	Agitator wheel
53	PA251313	2	Washer 012
54	747312ZN	1	Locknut M12 din 982
55	52371065	1	Bolt 10Mx65 din 931
56	PA251402	1	Articulated agitator
57	CON2000	1	Banding kit
58	CON1024	1	Support
59	CON100A	1	Left banding
60	CON100B	1	Right banding
61	CON1005	1	Baffle
62	65921ZN	3	Plain washer M12 din 125/A
63	558812ZN	2	Hex nut M12 din 934
64	52391235	1	Bolt M12x35 din 933
65	PAR 3000	1	Deflector for salt/sand
66	PAR3003	1	Deflector
67	PAR3004	1	Support Bracket RH
68	PAR3005	1	Support bracket LH
69	PAR3001	2	Deflector support
70	VB408150	2	Handwheel with lobes M8x20
71	PAR3002	2	Adj tube
72	559006ZN	4	Hex nut c/w washer M6
73	659206ZN	4	Plain washer M6
74	52390616	4	Bolt M6x16 din 933

LIMITED WARRANTY POLICY & REGISTRATION

Modern, Inc. warrants its products for a period of one year after date of sale by authorized dealer to be free from defects in material and workmanship, and will replace at its factory, any parts that will be returned, with shipping charges prepaid, and when examined by us, will disclose it to be defective. This warranty will not apply to implements or parts that have been subjected to misuse, negligence, accident, or that have been altered or repaired.

1. Parts may not be returned without authorization by ModernAg Products.
2. All products returned under warranty inspection claim must be returned PREPAID to our factory.
3. Our obligation under the above warranty is limited to repair or replacement at our factory of any part or parts which Modern, Inc. decides to be defective.
4. Products or parts that have been examined by Modern, Inc. and determined to be improperly operated, damaged by accident or negligence, field repaired or altered, are not covered by this warranty.
5. Modern, Inc. reserves the right to change our specification and designs at any time.
6. This warranty will not obligate Modern, Inc. to bear any cost of labor for field replacement, testing, or adjustment.

DEALER: I hereby certify that:

1. The machine has been correctly assembled in accordance with manufacturers instructions.
2. All bolts have been checked and tightened.
3. All other pre-delivery checks have been completed as per operators manual.
4. Purchaser was given operators manual and instructed in safe and correct usage of machine and on limitation of warranty.
5. Machine was tested and operates correctly.

PURCHASER: I hereby certify that:

1. The machine is correctly assembled.
2. Receipt of the operators manual which I have read and clearly understood.
3. I have a clear understanding of the warranty limitations.
4. I have a clear understanding on the correct and safe operation of the machine
5. That the machine needs regular maintenance as per instructions in operators manual.
6. I have a clear understanding on the capacity of this machine and am aware of its limitations.

MODEL _____

SERIAL # _____

DEALER _____

DATE DELIVERED _____

DEALER'S STAMP

MAIL TO:

PURCHASERS ADDRESS: