

FALL 2009



ROTARY TILLER
Operator's Manual

MODERN
AG PRODUCTS, LTD.

YOU'RE ALWAYS AHEAD...WITH A MODERN BEHIND.

010-0127-1
010-0128-2
010-0130-3

P.O. BOX 790 • BEAUMONT, TX 77704
409.833.2665 • 1.800.231.8198 FAX: 409.726.8333
www.modernusa.com

Go Galvanized!

CHECK LIST

PRE-DELIVERY

Inspect the tiller thoroughly after assembly to be certain it is set up properly before delivering it to the customer. It is the purchaser and/or operator's responsibility to....

___ Read and understand the information contained in this manual.

___ Operate, lubricate, assemble and maintain the equipment in accordance with all instructions and safety procedures in this manual.

___ Inspect the equipment and replace or repair any parts that are damaged or worn which under continued operation would cause damage, wear to other parts, or cause a safety hazard.

___ Return the equipment or parts to the authorized Modern dealer, from where it was purchased, for service or replacement of defective parts that are covered by warranty. (The Modern Factory may inspect equipment or parts before warranty claims are honored.)

___ Payment of all costs incurred by the dealer for traveling to or transporting the equipment for warranty inspection and or claims.


I have thoroughly instructed the buyer on the above described equipment, the review included the Operator's Manual content, equipment care, adjustments and safety information.

Date _____ Dealer's Rep Signature _____

The above equipment and Operator's Manual have been received by me and I have been thoroughly instructed as to care, adjustments and safe operations.

Date _____ Owner's Signature _____

SAFETY SECTION

The SAFETY ALERT SYMBOL  indicates that there is a potential hazard to personal safety involved and extra safety precautions must be taken. When you see this symbol on your machine or in this manual, be alert and carefully read the message that follows it.

DANGER: Indicates an imminently hazardous situation which, if not avoided, will result in death or serious injury. This signal word is limited to the most extreme situations.

WARNING: Indicates a potentially hazardous situation which, if not avoided, could result in death or serious injury.

CAUTION: Indicates a potentially hazardous situation which, if not avoided, may result in minor or moderate injury. It may also be used to alert against unsafe practices.

EQUIPMENT SAFETY GUIDELINES

- Safety of the operator and bystanders is one of the main concerns in designing and developing a tiller. However, every year accidents occur which could have been avoided by a few seconds of thought and a more careful approach to handling equipment. You, the operator, can avoid many accidents by observing the following precautions and insist those working with you, or for you, follow them.
- In order to provide a better view, certain photographs or illustrations in this manual may show an assembly with a safety shield removed. However, equipment should never be operated in this condition. Keep all shields in place. If shield removal becomes necessary for repairs, replace the shield prior to use.
- Replace any safety sign that is not readable or missing. Location of such safety signs are indicated in this manual.
- Never use alcoholic beverages or drugs that can hinder alertness or coordination while operating this equipment. Consult your doctor about operating this machine while taking prescription medications.
- Under no circumstances should children under the age of 18 be allowed to work with this equipment. Do not allow persons to operate or assemble this unit until they have read this manual and have developed a thorough understanding of the safety precautions and how it works. Review the safety instructions with all users annually.
- This equipment is dangerous to children and persons unfamiliar with its operation. The operator should be a responsible, properly trained and physically able person familiar with farm machinery and trained in this equipment's operations. If the elderly are assisting with farm work, their physical limitations need to be recognized and accommodated.
- Use a tractor equipped with a Roll Over Protective System and seat belts. (ROPS)
- Never exceed the limits of a piece of machinery. If its ability to do a job, or to do so safely, is in question - DON'T TRY IT.
- Do not modify the equipment in any way. Unauthorized modification could result in serious injury or death and may impair the function and life of the equipment.
- In addition to the design and the confirmation of this implement, including safety signs and safety equipment, hazard control and accident prevention are dependent upon the awareness, concern, prudence, and proper training of personnel involved in the operation, transport, maintenance, and storage of the machine. Refer also to safety messages and operation instruction in each of the appropriate sections of the tractor and tiller manuals. Pay close attention to the safety signs affixed to the tractor and the tiller.

SAFETY SECTION continued

PREPARATION

- Never operate the tractor and tiller until you have read and completely understand this manual, the Tractor Operator's Manual, and each of the safety messages found on the safety signs on the tractor and tiller.
- Personal protection equipment including hard hat, safety glasses, safety shoes, and gloves are recommended during assembly, installation, operation, adjustment, maintenance, repairing, removal, or moving the implement. Do not allow long hair, loose fitting clothing, or jewelry to be around equipment.
- **PROLONGED EXPOSURE TO LOUD NOISE MAY CAUSE PERMANENT HEARING LOSS!** Tractors with or without tillers attached can often be noisy enough to cause permanent, partial hearing loss. We recommend that you wear hearing protection on a full-time basis if the noise in the operator's position exceeds 80 db. Noise over 80 db on a long-term basis can cause severe hearing loss. Noise over 90 db adjacent to the operator over a long-term basis may cause permanent, total hearing loss. **NOTE:** Hearing loss from loud noise (from tractors, chain saws, radios, and other such sources close to the ear) is cumulative over a lifetime without hope of natural recovery.
- Operate the tiller only with a tractor equipped with an approved Roll-Over-Protective System (ROPS). Always wear your seat belt. Serious injury or even death could result from falling off the tractor — particularly during a turnover when the operator could be pinned under the ROPS or the tractor.
- Clear area to be tilled of stones, branches or other debris that might be thrown or entangled in the tiller, causing injury or damage.
- Operate only in daylight or good artificial light.
- Ensure tiller is properly mounted, adjusted and in good operating condition.
- Ensure that all safety shielding and safety signs are properly installed and in good condition.

STARTING AND STOPPING SAFETY

- Check the tractor master shield over the PTO stub shaft. Make sure it is in good condition and fastened securely to the tractor. Purchase a new shield if old shield is damaged or missing.
- All tractors that are not equipped with a "live" power takeoff (PTO) need to be equipped with an over-running PTO clutch. These are available through most farm equipment stores.

NOTE: The addition of an over-running PTO clutch may change the length of the PTO drive-line required. Pay extra attention to the instructions on the PTO Driveline Installation. Be sure that the driveline system guarding is adequate.

- Tiller operating power is supplied from the tractor PTO. Refer to your tractor manual for PTO engagement and disengagement instructions. Know how to stop tractor and tiller quickly in case of an emergency.
- When engaging PTO, the engine RPM should always be at idle speed. Once engaged and ready to start tilling, raise PTO speed to 540-RPM and maintain throughout tilling operation.

OPERATIONAL SAFETY

- The use of this equipment is subject to certain hazards that cannot be protected against by the mechanical means or product design. All operators of this equipment must read and understand this entire manual, paying particular attention to safety and operating instructions, prior to using. If there is something in this manual you do not understand, ask your supervisor, or your dealer, to explain it to you.
- Most accidents occur because of neglect or carelessness. Keep all helpers and bystanders at least several hundred feet from an operating rotary tiller. Only properly trained people should operate this machine.

SAFETY SECTION continued

- When machine is operated in populated areas where thrown objects could injure persons or property, operation must be stopped when anyone comes within several hundred feet.
- The majority of the accidents involve entanglement on the driveline, injury of by-standers by the objects thrown by the rotating tines, and operators being knocked off the tractor by low hanging limbs and then being run over by the tiller. Accidents are most likely to occur with machines that are loaned or rented to someone who has not read the owner's manual and is not familiar with a rotary tiller.
- The rotary tiller is designed for use only on tractors with the power take- off (PTO) turning at 540-RPM.
- Install and secure all guards and shields before starting or operating. The tiller tines, driveline guards and tractor, shields should be used and maintained in good working condition. They should be inspected carefully, at least daily, for missing or broken chain links, shields, or guards. (Worn items must be replaced at once to reduce possibility of injury.)
- Disengage power takeoff (PTO) and place transmission in neutral before attempting to start engine.
- Many varied objects, such as wire, cable, rope, or chains, can become entangled in the operating parts of the tiller. These items could then swing outside the housing at greater velocities than the tines. Such a situation is extremely hazardous. Inspect the cutting area for such objects before tilling. Remove any like objects from the site.
- Never allow the tilling tines to contact such items. Never assume an area is clear. **Always Check!**
- Always stop the tractor, disengage PTO, set brake, shut off the tractor engine, remove the ignition key, lower implement to the ground and allow rotating pieces to come to a complete stop before dismounting tractor. Never leave equipment unattended with the tractor running.
- Never place hands or feet under tiller with tractor engine running or before you are sure all motion has stopped. Stay clear of all moving parts.
- Do not reach or place any part of your body under equipment until it is blocked securely.
- Do not allow riders on the rotary tiller or tractor at anytime. There is no safe place for any riders.
- Do not operate unless all personnel, livestock, and pets are several hundred feet away to prevent injury by thrown objects.
- Never operate tractor and rotary tiller under trees with low hanging limbs. Operators can be knocked off the tractor and then run over by the rotating tines.
- The rotating parts of this machine have been designed and tested for rugged use. However, they could fail upon impact with heavy, solid objects such as steel guardrails and concrete abutment. Such impact could cause the broken objects to be thrown outward at very high velocities. To reduce the possibility of property damage, serious injury, or even death, never allow the tilling tines to contact such obstacles.
- Stop rotary tiller and tractor immediately upon striking an obstruction. Turn engine off, remove key, inspect and repair any damage before resuming operation.
- Stay alert for uneven terrain, holes, rocks, and roots and other hidden hazards. Keep away from drop-offs and hazards that could cause roll over. Use extreme care and maintain minimum ground speed when transporting or operating on hillsides, over rough ground and when operating close to ditches or fences. Be careful and slow down when turning sharp corners and changing direction on slopes. Do not start or stop suddenly on slopes. Avoid operation on steep slopes. In extremely uneven terrain, rear wheels weights, front tractor weight, and/or tire ballast should be used to improve stability.
- Pass rotary tiller diagonally through sharp dips and avoid sharp drops to prevent "hanging up" tractor and rotary tiller. Practice will improve your skills in maneuvering on rough terrain. Always cut down slopes, never across the face. Always check tractor manual for proper use on slopes.

SAFETY SECTION continued

- When using a unit, a minimum 20% of tractor and equipment weight must be on tractor front wheels. Without this weight, tractor could tip over, causing personal injury or death. The weight may be attained with a front- end loader, front wheel weights, ballast in the tires or front tractor weights. When attaining a minimum 20% of tractor and equipment weight on the front wheels, you must not exceed the ROPS weight certification. Weigh the tractor and equipment. **Do not guess or estimate!**

TRANSPORT SAFETY

- Comply with state and local laws governing highway safety and movement of farm machinery on public roads.
- The use of flashing amber lights is acceptable in most localities. However, some localities prohibit their use. Local laws should be checked for all lighting and marking requirements.
- At all times, when driving the tractor and equipment on the road or highway under 20mph (32kph) use flashing amber warning lights and a slow moving vehicle (SMV) identification emblem. Do not exceed 20 mph (32 kph). Reduce speed on rough roads and surfaces.
- Plan your route to avoid heavy traffic.
- Always install transport locks, pins or brackets before transporting.
- Do not drink and drive.
- Be a safe and courteous driver. Always yield to oncoming traffic in all situations, including narrow bridges, intersections, etc. Watch for traffic when operating near or crossing roadways.
- Turn curves or go up or down hills only at a low speed and at a gradual steering angle. Make certain that a least 20% of the tractor's weight is on the front wheels to maintain safe steerage. Slow down on rough or uneven surface. Always check tractor manual for proper use on slopes.
- Use extreme care and maintain minimum ground and when operating close to ditches or fences. Be careful when turning sharp corners.
- Never allow riders on either tractor or tiller.

STORAGE SAFETY

- Following operation, or when unhooking the tiller, stop the tractor, set the brakes, disengage the PTO, shut off the engine and remove the ignition keys.
- Store the unit in an area away from human activity.
- Do not park equipment where it can be exposed to direct contact to livestock for long periods of time. Damage and livestock injury could result.
- Make sure all parked machines are on a hard, level surface and engage all safety devices.

ASSEMBLY SECTION

STEP 1 - With rotary tiller still in crate, lay flat on a level surface. Cut banding straps on the two (2) up right crate posts.

STEP 2 - Remove the top & upper side sections of the crate, leaving the rotary tiller resting on the bottom section.

STEP 3 - Remove tie wire holding the PTO shaft and set aside PTO.

STEP 4 - Attach tiller according to your tractors manual and using the instructions "Attaching to Tractor"

STEP 5 - Install tail back plate chain.

STEP 6 - Install PTO shaft as outlined in the "Attaching to Tractor"

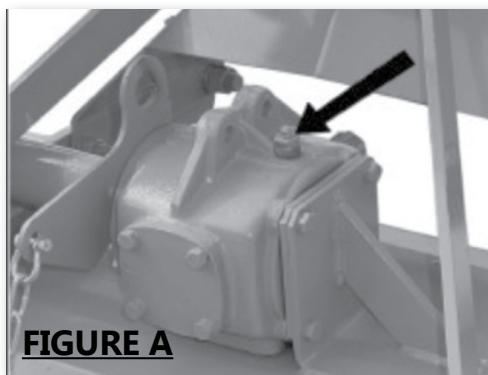
Note: The safety chains on the PTO shaft should be attached to the tractor and tiller to prevent the plastic safety shield from rotating.

BEFORE PUTTING ROTARY TILLER INTO SERVICE (IMPORTANT- INSTRUCTIONS PRIOR TO START UP) SHIPPED WITH OIL IN GEAR BOXES SHIPPED WITHOUT GREASE IN GREASE FITTINGS. UNIT MUST BE SERVICED BEFORE USING.

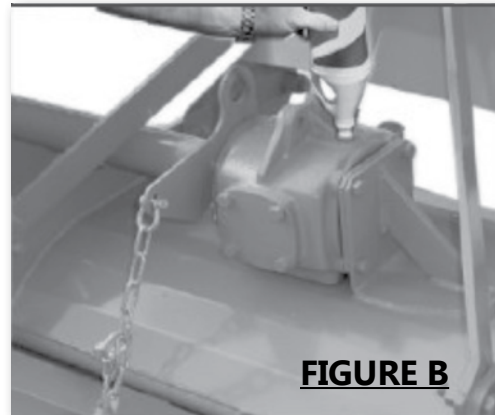
- In Gearboxes use gear oil (type GL5-85W 140 or Triple Zero Grease; which can be poured, and has "EP" i.e. "Extreme Pressure" additives.)
- For all Grease Fittings use TYPE/grade II tube grease.

STEP 1 - Place rotary tiller so that the deck is secure and level.

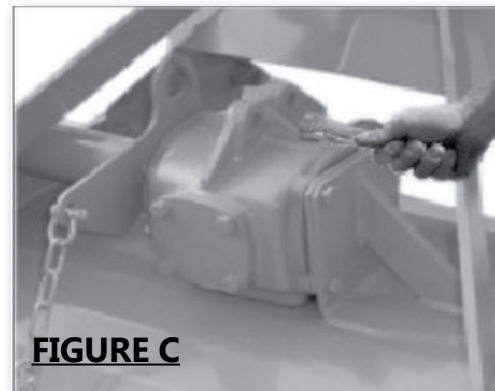
STEP 2 - Remove 1/2" Pipe Plug (Located at top of transmission gearbox). **See Figure A.**



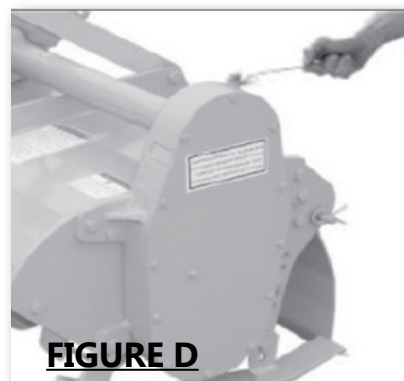
STEP 3 - Fill gearbox using gear oil until gearbox is approximately 1/2 full. **See Figure B.**



STEP 4 - Replace and tighten the 1/2" pipe plug and clean away any excess oil. **See Figure C.**



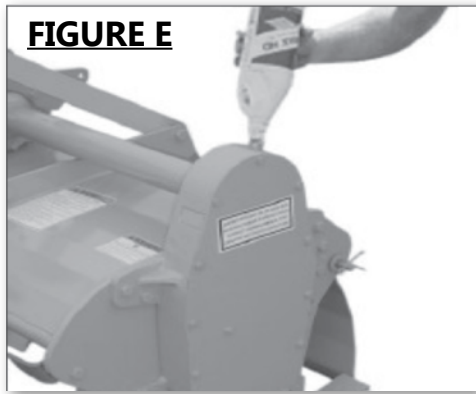
STEP 5 - Remove 1/2" Pipe Plug (Located at top of side gearbox, **See Figure D** and the 1/8" check plug (Located in side of the side gearbox) if oil comes out of check plug hole, replace plug immediately and go to STEP 7. If oil doesn't come out go to STEP 6.



ASSEMBLY SECTION continued

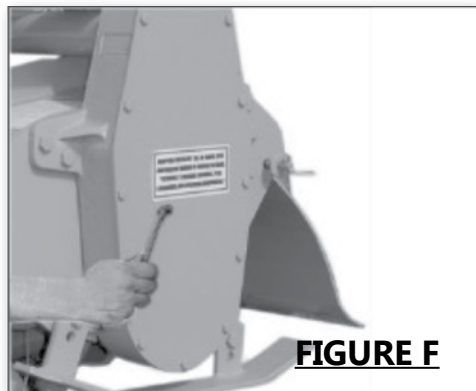
STEP 6 - Fill side gearbox using gear oil until the oil begins to overflow from the check plug hole.

See Figure E.



STEP 7 - Replace and tighten the 1/2" vent plug and the 1/8" check plug. Clean away any excess oil.

See Figure F.



STEP 8 - Grease the grease fitting on the "out-board hub," the two (2) grease fittings on the PTO universal joints, the two (2) grease fittings on the PTO safety shield and the inner surface portion of the PTO shaft. *See Figures G, H and I.*

FIGURE G

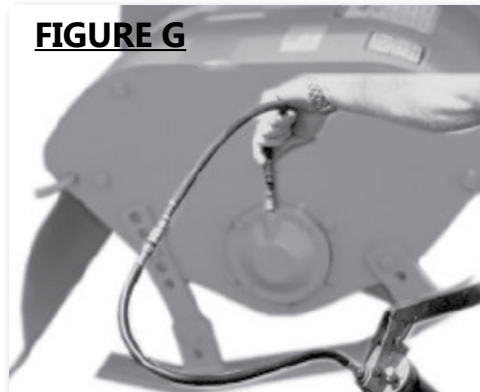


FIGURE H

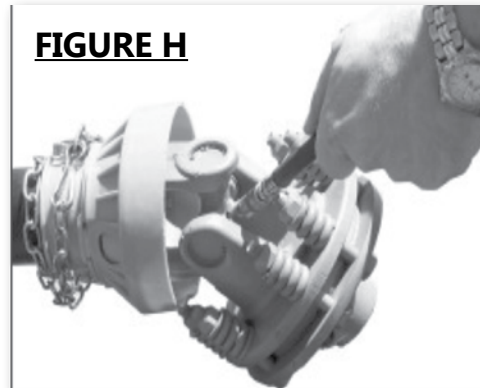
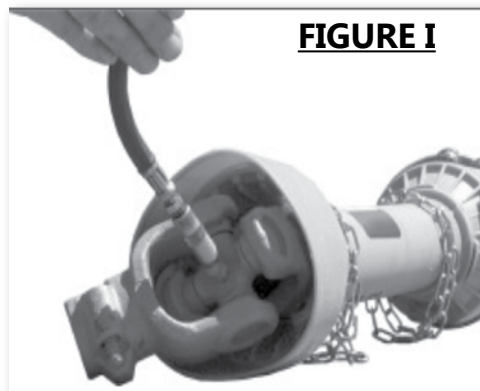


FIGURE I



OPERATING SECTION

OPERATING INSTRUCTIONS

- STEP 1 - Before each use perform the maintenance described in maintenance section.
- STEP 2 - Read, understand, and follow the information on safety training, preparation, starting and stopping safety, operational safety, transport safety warning sections of this manual.
- STEP 3 - With the rotary tiller positioned on level ground, adjust the tractor lift arms so that when lifted, the rotor bar remains parallel to the ground.
- STEP 4 - With the rotary tiller attached to the tractor, raise and support the tiller with suitable blocks. Adjust the skids, located on the sides of the tiller. The adjustment bolts for both right and left sides should be positioned in the same adjustment hole. This allows the tiller to till the same depth on each side. Adjust the back plate, with regulating chain, until the desired mulching effect is found.

Note: Never attempt to adjust the rotary tiller while the tractor is running.

- STEP 5 - Raise the tiller and remove the blocks. Lower the tiller to the ground.
- STEP 6 - With the tractor at idle RPM and the tiller lifted off of the ground, engage PTO and slowly advance throttle to 540 PTO RPM. NOTE: Rotary tiller is designed to run at 540 PTO RPM only.
- STEP 7 - Select a low gear for the tractor and begin to move forward. Tractor ground speed is to be controlled by gear selection only and not engine speed. As the tractor moves forward, slowly lower the tiller down. Allow the tiller tines to gradually engage the ground.



Never travel at a fast ground speed while using the tiller, this could damage it. Never attempt to turn the tractor or travel in reverse with the PTO engaged and the tiller in the ground. Always raise the tiller out of the ground when backing up or attempting to turn. Failure to do so may cause damage to the tiller.

- STEP 8 - After each use clean all debris from the tiller tines. Replace any missing or illegible safety decals. Inspect for any damaged or worn parts and replace before next use. Store rotary tiller in a dry environment.

MAINTENANCE SECTION

1. Periodically check and maintain proper gear oil level.
2. Every 8 hours, (1) grease "out-board hub", (2) PTO shaft universal joints, (3) PTO shaft safety shield and (4) PTO telescoping surface.

NOTE: Use only a grade Type II tube grease.

NOTE: Do not grease the slip clutch assembly.

3. Before each use check to make sure all safety shields are installed and working properly.
4. Check tiller tines for cracks and breaks before every use.
5. Periodically check all nuts and bolts to insure they are tight and secure.
6. Periodically loosen torque spring bolts and allow slip clutch to slip for approximately two (2) revolutions. Loosen the bolts until the springs lose contact with the flange yoke. This ensures that the slip clutch is not in a "locked" position.
7. Make sure that the clutch slips.
8. To retighten the slip clutch, tighten the torque spring bolts until the nut makes contact with the flange yoke and further tighten one and a half turns (1-1/2). This is a good starting point, further adjustments may need to be made based on soil conditions.

NOTE: Do not over or under tighten slip clutch assembly or damage may occur.

MAINTENANCE SAFETY

- Good maintenance is your responsibility. Poor maintenance is an invitation to trouble.
- Follow good shop practices.
- Keep service area clean and dry.

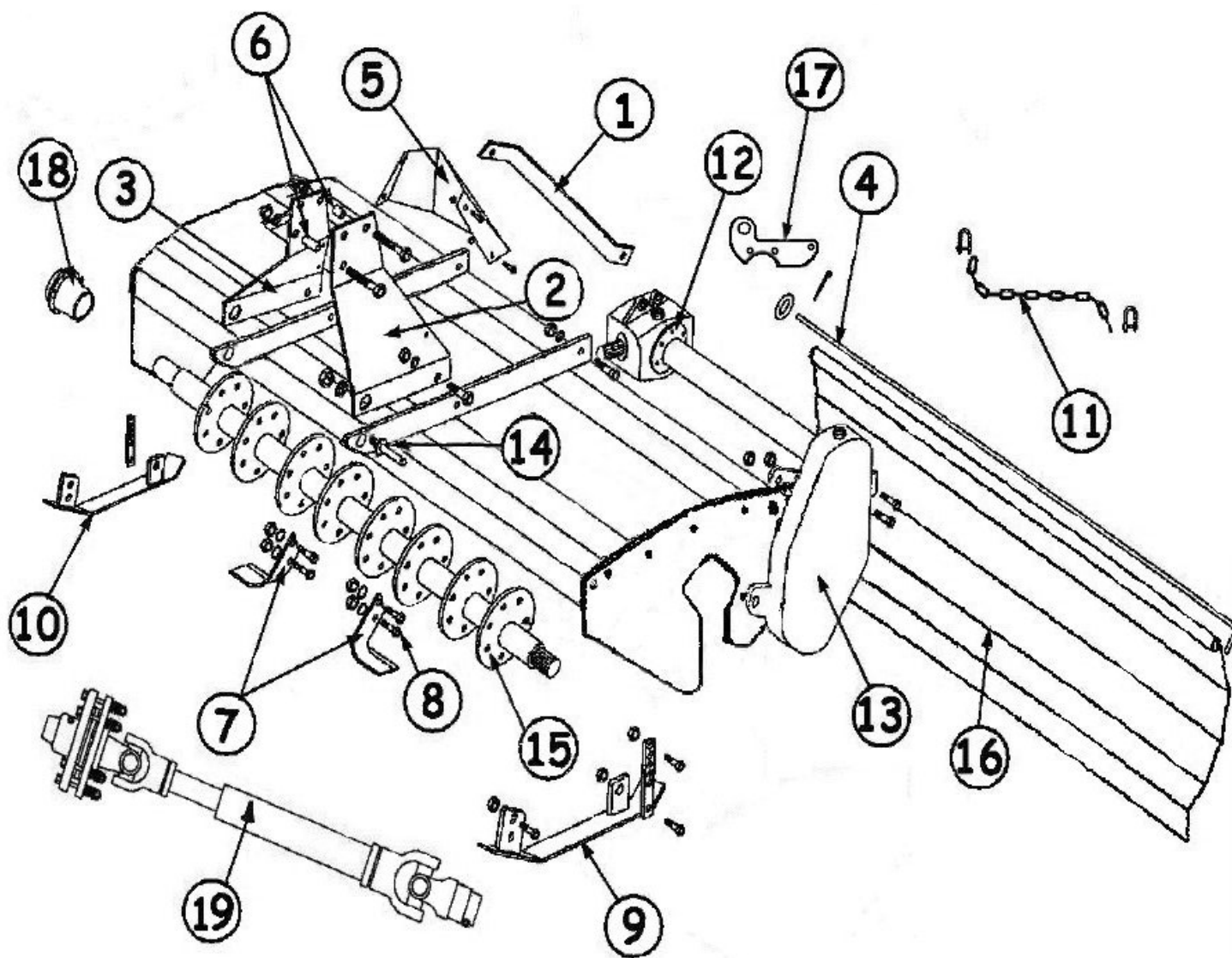
NOTE: Do not allow the tractor engine or rotary tiller to bog down or stall. This causes undue wear and tear on the tiller and tractor. If this continues to happen reduce ground speed and raise tilling depth of rotary tiller. Never attempt to re-move objects from the rotor bar until the tractor has been shut down and the tiller tines have completely stopped.



- Be sure electrical outlets and tools are properly grounded.
- Use adequate light for the job at hand.
- Make sure there is plenty ventilation. Never operate the engine of the towing vehicle in a closed building. The exhaust fumes may cause asphyxiation.
- Before working on this machine, disengage the PTO, shut off the engine, set the brakes, and remove the ignition keys.
- Be certain all moving parts on attachments have come to a complete stop before attempting to perform maintenance.
- Never work under equipment unless it is blocked securely.
- Always use personal protection devices such as eye, hand and hearing protectors, when performing any service or maintenance.
- Frequently check tiller tines. They should be sharp, free of nicks and cracks and securely fastened.
- Periodically tighten all bolts, nuts, and screws and check that all cotter pins are properly installed to ensure unit is in safe condition.
- When completing a maintenance or service function, make sure all safety shields and devices are installed before placing unit in service.
- After servicing, be sure all tools, parts and service equipment are removed from tiller.
- Do not allow debris, grease or oil to build up on any deck or platform.
- Where replacement parts are necessary for periodic maintenance and servicing, genuine factory replacement parts must be used to restore your equipment to original specifications.
- The manufacturer will not be responsible for injuries or damages caused by use of unapproved parts and/or accessories.
- A fire extinguisher and the first aid kit should be kept readily accessible while performing maintenance on this equipment.

This page intentionally left blank.

ROTARY TILLER PARTS SECTION

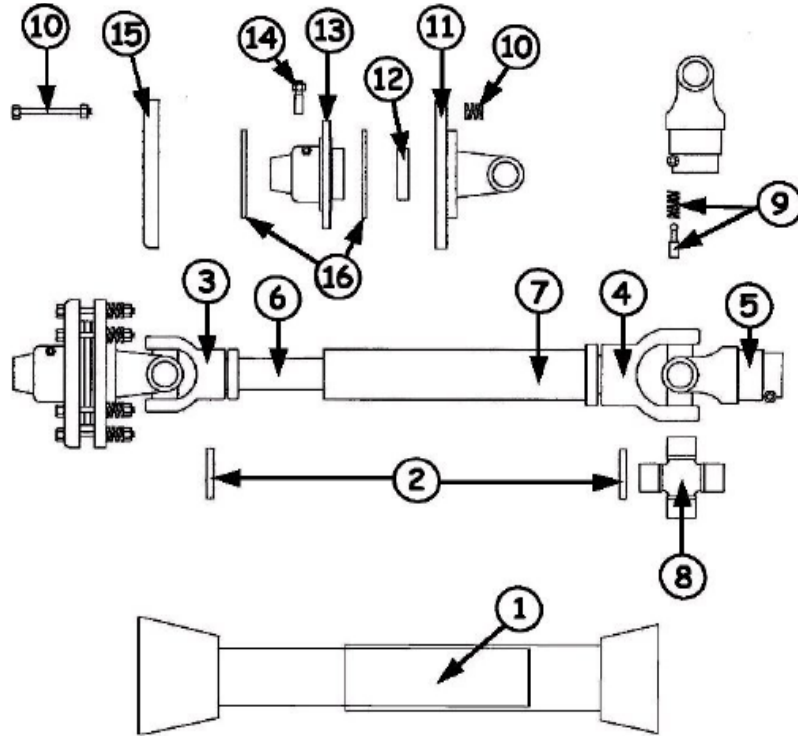


ROTARY TILLER PARTS SECTION

ITEM	PART NO.	DESCRIPTION
1	380108	Lift Arm Brace
2	310085	Lift Arm (Left Hand)
3	310086	Lift Arm (Right Hand)
4	505116	Tail Rod Assembly
4 - 010-0130-3	505114	Tail Rod Assembly
5	505025	Center Piece Kit
6	505030	Lift Arm Spacer
7	505002	Tine Pkg. (1-right & 1-left) w/bolts
7	505006	Tine Pkg. (3-right & 3-left) w/bolts
7 - 010-0127-1	505036	4' Complete Tine Pkg. (36 pieces)
7 - 010-0128-2	505042	5' Complete Tine Pkg. (42 pieces)
7 - 010-0130-3	505054	5' Complete Tine Pkg. (54 pieces)
8	505012	Tine Bolt Pkg. (12 pieces)
8 - 010-0127-1	505072	Tine Bolt Pkg. (72 pieces)
8 - 010-0128-2	505084	Tine Bolt Pkg. (84 pieces)
8 - 010-0130-3	505108	Tine Bolt Pkg. (108 pieces)
9	505050	Skid Assembly (Left Hand)
10	505057	Skid Assembly (Right Hand)
11	505143	Chain & Shackle Kit
12 - 010-0127-1	184064	Top Gearbox Assembly
12 - 010-0128-2	184064	Top Gearbox Assembly
12 - 010-0130-3	184064	Top Gearbox Assembly
13	184069	Side Gearbox Assembly
14	50001	Lift Pins CAT. 1 (Pkg. 2)
15 - 010-0127-1	402038	Rotor Assembly
15 - 010-0128-2	402042	Rotor Assembly
15 - 010-0130-3	402053	Rotor Assembly
16 - 010-0127-1	402060	Back Plate Assembly
16 - 010-0128-2	402061	Back Plate Assembly
16 - 010-0130-3	402062	Back Plate Assembly
17	380050	Chair Lug
18	184070	Outboard Hub Assembly
19	147122	PTO Shaft

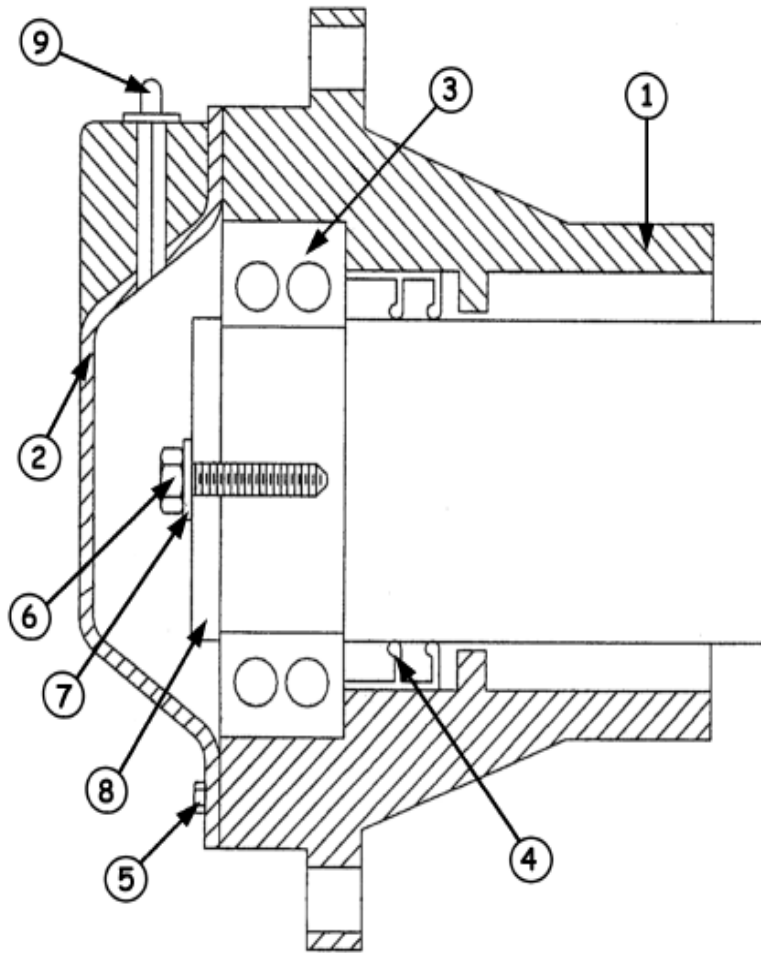
Part numbers are the same for 010-0127-1, 010-0128-2 and 010-0130-3 except where noted.

22" PTO 147122 PART LIST



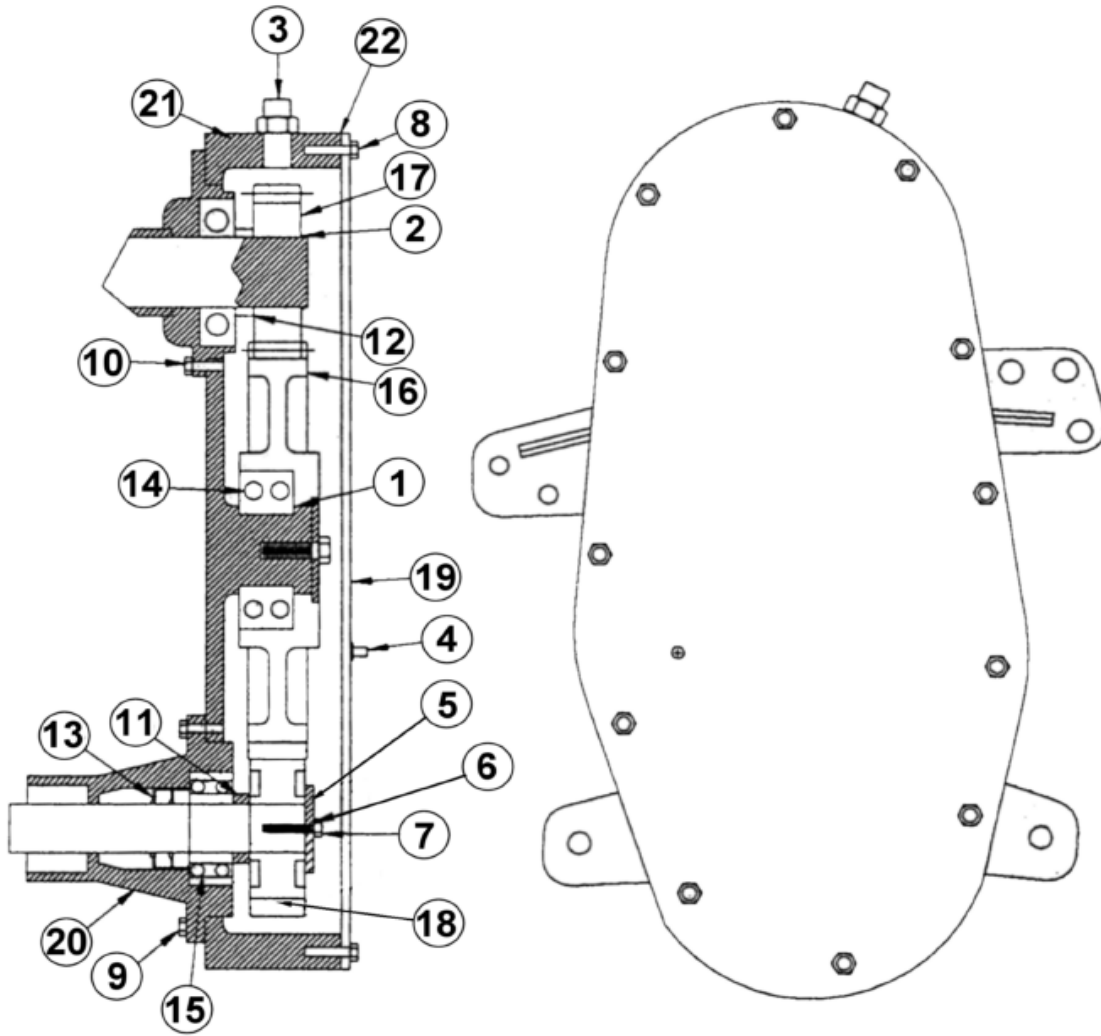
ITEM	PART NO.	DESCRIPTION
1	124310	Series Safety Shield
2	170120	Roll Pin
3	151045	Male Tube End Yoke
4	151050	Female Tube End Yoke
5	151035	Tractor End Yoke
6	151090	Inner Tube 14 Series
7	151091	Outer Tube 14 Series
8	170015	Cross Kit # 4
9	170110	Quick Disconnect Pin
10	140218	Torque Spring
11	140226	Flanged Yoke
12	140221	Bushing
13	140220	Friction Hub
14	140224	10 x 70 Bolt
15	140216	Pressure Plate (Outer)
16	140023	Slip Clutch Bolt
17	140219	Friction Disc

OUTBOARD HUB 184070 PART LIST



ITEM	PART NO.	DESCRIPTION
1	902341.....	Hub Housing
2	902342.....	Cap
3	902019.....	Self Aligning Ball Bearing (1310)
4	505017.....	Seal Double Lip (Pkg. 2)
5	902345.....	Bolt M-6-16
6	902011.....	Bolt M-12-25
7	902010.....	Lockwasher M-12
8	902009.....	Washer
9	902349.....	Grease Zerk 1/4"

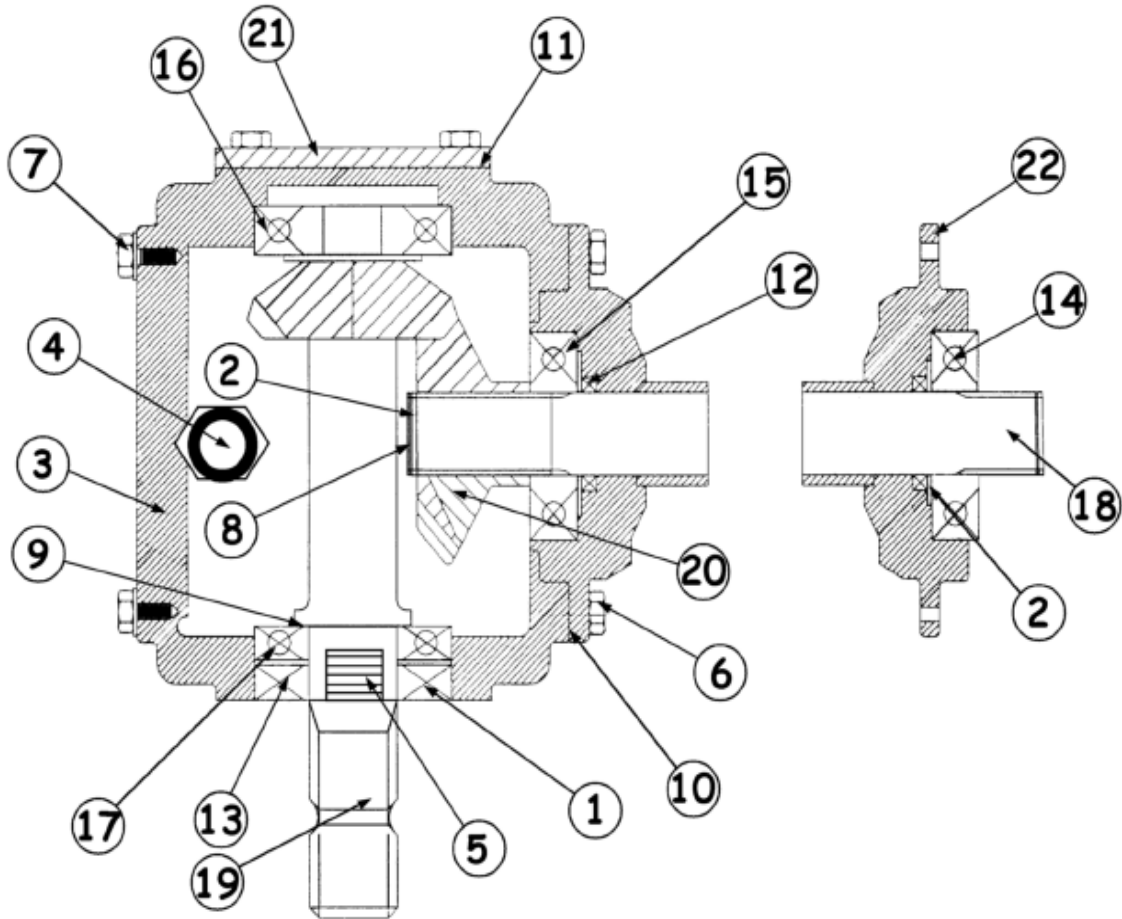
GEARBOX 184069 PARTS SECTION



GEARBOX 184069 PARTS SECTION

ITEM	PART NO.	DESCRIPTION
1	902005.....	Retaining Ring 90mm
2	902006.....	Retaining Ring 40mm
3	902007.....	Pressure Plate Plug 1/2" - 14 NPT
4	902008.....	Sq. Hd. Plug 1/2" - 18 NPT
5	902009.....	Flat Washer (Main)
6	902010.....	Lockwasher M-12
7	902011.....	Bolt M-12-25
8	502247.....	Bolt M-10-16(Pkg. 12)
9	502296.....	Bolt M-10-25 (Pkg. 6)
10	502207.....	Bolt M-10-20 (Pkg. 6)
11	902015.....	Spacer (Output)
12	902016.....	Spacer (Input)
13	505017.....	Seal Double Lip (Pkg. 2)
14	902018.....	3210 Double Bearing (Ball)
15	902019.....	1310 Self Aligning Bearing (Ball)
16	902021.....	Gear - 34 teeth
17	902022.....	Gear - 16 teeth
18	902020.....	Gear - 28 teeth
19	902001.....	Cover
20	902002.....	Side Box Outboard Hub Housing
21	902003.....	Housing
22	902004.....	Gasket

TOP GEARBOX PARTS SECTION



TOP GEARBOX PARTS SECTION

ITEM	PART NO.	DESCRIPTION
1	902301.....	Retaining Ring 72mm
2	902302.....	Retaining Ring 40mm
3	902329.....	Housing RTA - 50
4	902304.....	Pressure Plate Plug 1/2" - 14 NPT
5	902305.....	Sq. Hd. Plug 1/4" - 18 NPT
6	902296.....	Bolt M-10-25 (Pkg. 6)
7	505008.....	Bolt M-10-30 (Pkg. 4)
8	902309.....	Spacer
9	502243.....	Shim Pack (Pkg. 8)
10	902314.....	Output Gasket 0.8mm
10	902315.....	Output Gasket 0.5mm
11	902316.....	Input Gasket 0.4mm
11	902317.....	Input Gasket 0.2mm
12	902318.....	Output Seal Double Lip
13	902319.....	Input Seal Double Lip
14	902320.....	Sealed Ball Bearing (6308)
15	902321.....	Ball Bearing (6308)
16	902322.....	Ball Bearing (6307)
17	902323.....	Ball Bearing (6207)
18 - 010-0127-1.....	902324.....	Output Shaft 500mm
18 - 010-0128-2.....	902330.....	Output Shaft 700mm
18 - 010-0130-3.....	902331.....	Output Shaft 900mm
19	902325.....	Pinion Shaft 13 teeth
20	902326.....	Output Gear 19 teeth
21	902327.....	Cap Blank
22 - 010-0127-1.....	902328.....	Cap Hub
22 - 010-0128-2.....	902332.....	Cap Hub
22 - 010-0130-3.....	902333.....	Cap Hub

Part numbers are the same for 010-0127-1, 010-0128-2 and 010-0130-3 except where noted.

LIMITED WARRANTY POLICY & REGISTRATION

Modern, Inc. warrants its products for a period of one year after date of sale by authorized dealer to be free from defects in material and workmanship, and will replace at its factory, any parts that will be returned, with shipping charges prepaid, and when examined by us, will disclose it to be defective. This warranty will not apply to implements or parts that have been subjected to misuse, negligence, accident, or that have been altered or repaired.

1. Parts may not be returned without authorization by ModernAg Products.
2. All products returned under warranty inspection claim must be returned PREPAID to our factory.
3. Our obligation under the above warranty is limited to repair or replacement at our factory of any part or parts which Modern, Inc. decides to be defective.
4. Products or parts that have been examined by Modern, Inc. and determined to be improperly operated, damaged by accident or negligence, field repaired or altered, are not covered by this warranty.
5. Modern, Inc. reserves the right to change our specification and designs at any time.
6. This warranty will not obligate Modern, Inc. to bear any cost of labor for field replacement, testing, or adjustment.

DEALER: I hereby certify that:

1. The machine has been correctly assembled in accordance with manufacturers instructions.
2. All bolts have been checked and tightened.
3. All other pre-delivery checks have been completed as per operators manual.
4. Purchaser was given operators manual and instructed in safe and correct usage of machine and on limitation of warranty.
5. Machine was tested and operates correctly.

PURCHASER: I hereby certify that:

1. The machine is correctly assembled.
2. Receipt of the operators manual which I have read and clearly understood.
3. I have a clear understanding of the warranty limitations.
4. I have a clear understanding on the correct and safe operation of the machine
5. That the machine needs regular maintenance as per instructions in operators manual.
6. I have a clear understanding on the capacity of this machine and am aware of its limitations.

MODEL _____

SERIAL # _____

DEALER _____

DATE DELIVERED _____

DEALER'S STAMP

MAIL TO:

PURCHASERS ADDRESS: